

HEALTH HAPPENS IN NEIGHBORHOODS

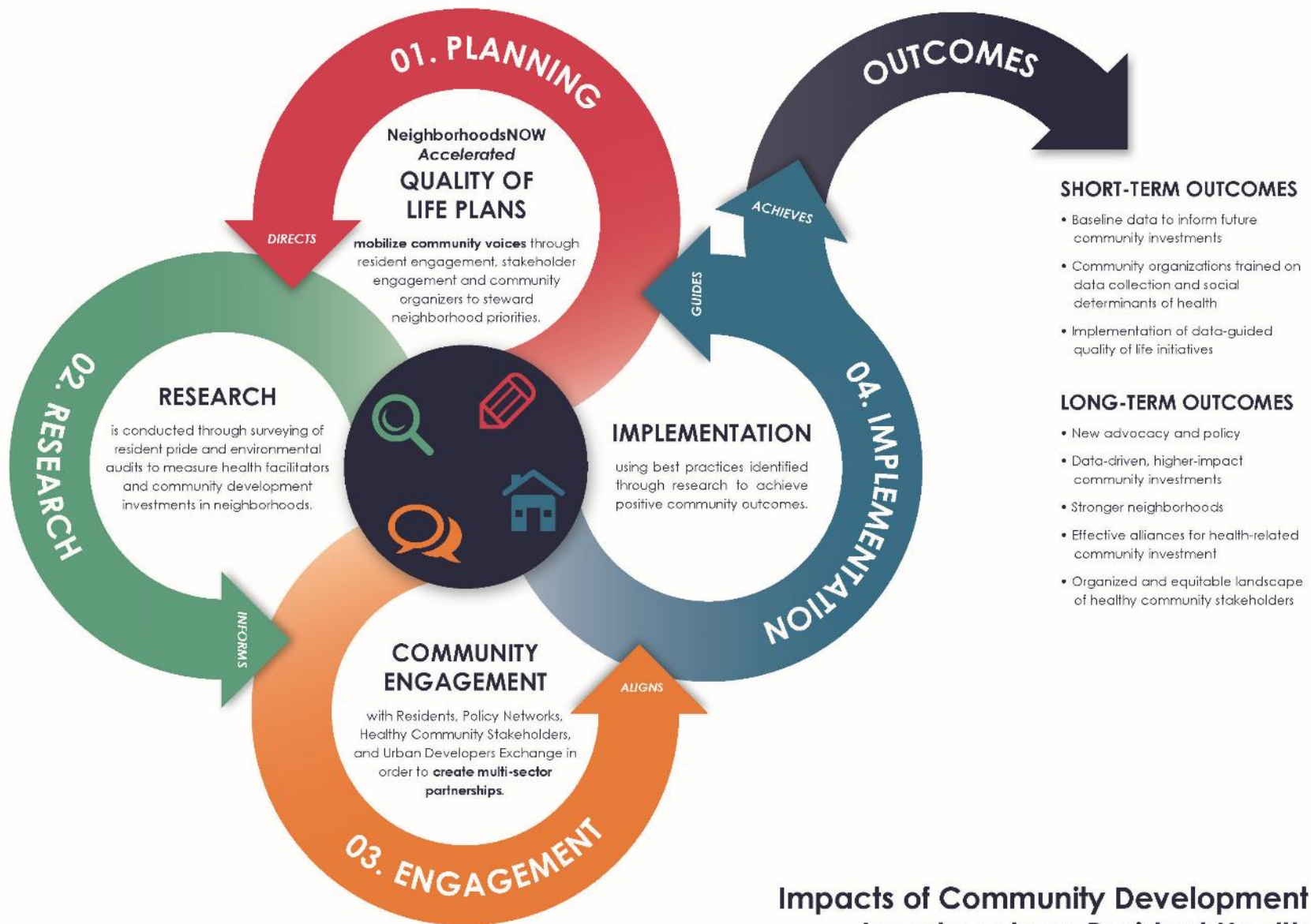
Impacts of Community Development
Investments on Resident Health



Health Forward
FOUNDATION

LISC
GREATER KANSAS CITY





Partners

- **LISC Greater Kansas City**
- **Health Forward Foundation**
- **Dotte Agency and KU School of Architecture**
- **NeighborWorks Success Measures**
- **Health Departments of KCMO and KCK**
- **Ivanhoe Neighborhood Council, Blue Hills Neighborhood Association, Scarritt Renaissance Neighborhood Association, Douglass-Sumner Neighborhood Association and Downtown Shareholders**

Our Approach

COMMUNITY INPUT



Quality of
Life Plans

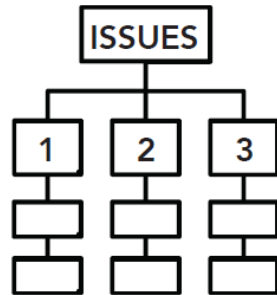


Neighborhood
Pride Evaluation Surveys



Assets and
Opportunities Mapping

PRIORITIZED BY RESIDENTS



Priority Health
Issues Identified

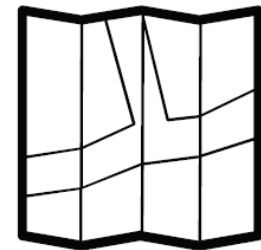


Sorted by
neighborhood
representatives

NEIGHBORHOOD HEALTH RESOURCES



Evidence-based
neighborhood health
report (this document)



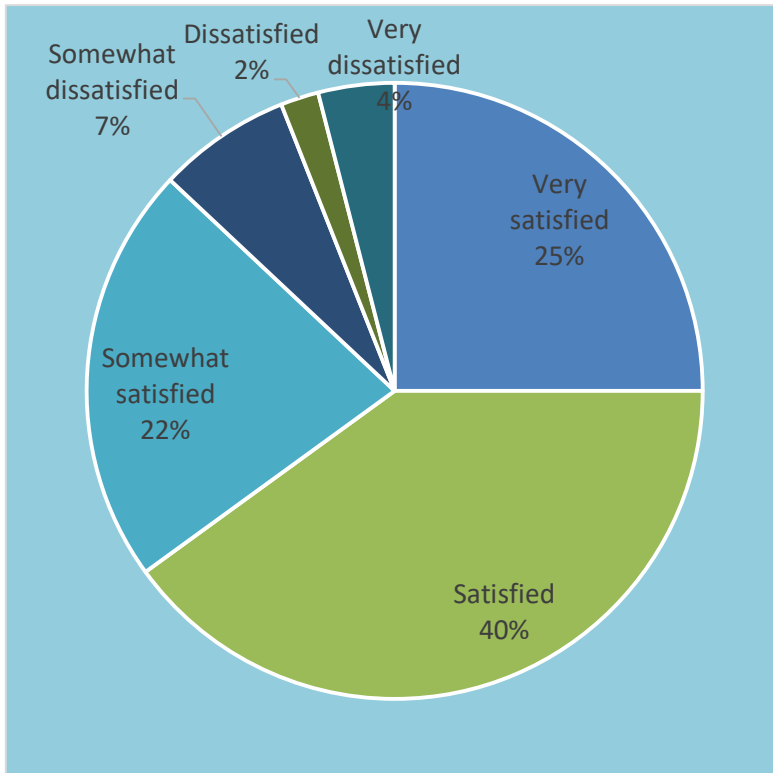
Community Maps and
Neighborhood Audits

Community Input: Primary Data Collection

- **Surveys developed to measure resident pride related to feelings around homeownership, safety, access to services and neighborhood connectedness and resident's ability to change/improve their neighborhoods**
- **465 surveys collected across five neighborhoods**
- **Discovered: Many people feel connected to their neighbors, feel that their community has improved and expressed confidence that it will improve in the future**

Ivanhoe Survey

Overall, considering everything, how satisfied would you say you are living in this community?

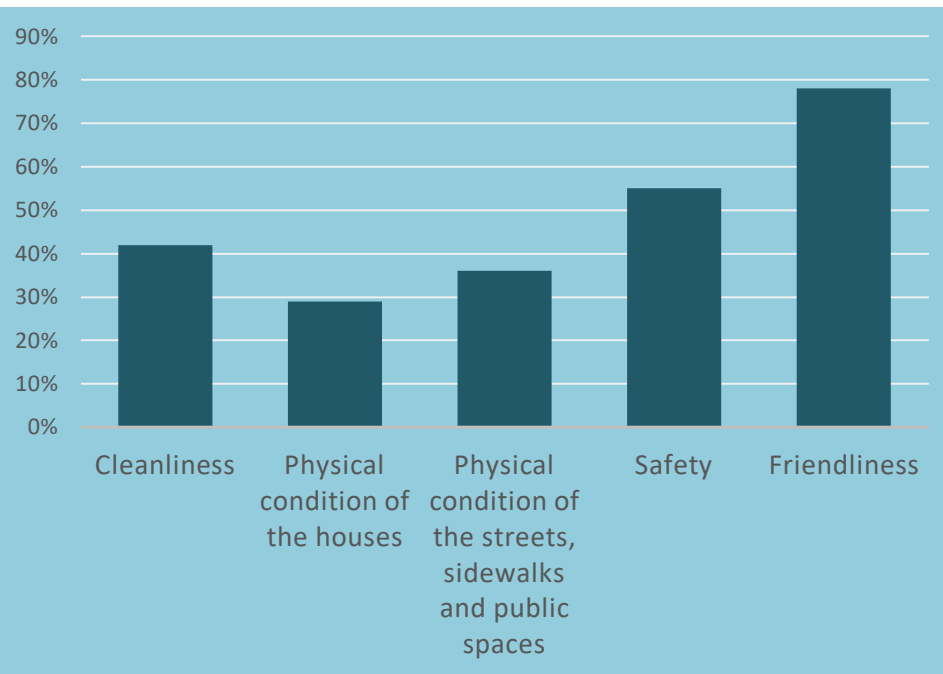


Significant, positive predictors of resident satisfaction:

- 1. Cleanliness**
- 2. Affordability**
- 3. Parks**
- 4. Grocery shopping appropriateness for seniors**

Ivanhoe Survey

How would you rate each of the following aspects of this neighborhood?



Significant, positive predictors of resident feeling of safety:

- 1. perception of friendliness**
- 2. neighborhood was a “good value for the price”**
- 3. street cleanliness and quality**
- 4. satisfaction with parks, playgrounds**
- 5. access to quality child care**

68% of respondents indicated they feel “Very Connected” or “Connected”

66% of respondents indicated that they were either “Very willing” or “Willing” to work with others to make things happen

KCMO Health Department Analysis

- **People care about community spaces:** Parks, playgrounds, community centers, restaurants and coffee shops
- **Looks do matter.** Cleanliness, sanitation and infrastructure repair
- **Engagement needs to evolve.** Neighborhoods have agency and residents feel as if their time and energy spent on civic participation *matters*

Asset and Opportunity Mapping



Card Sorting



Walking Audit



LISC Neighborhood Audit

Neighborhood/Block:

Date:

Residential Land Use

1. Subjective Assesment: Is the street walkable?

☐ Strongly Agree ☐ Agree ☐ Disagree ☐ Strongly Disagree

Notes:

2. Number of residential units per block? _____

Notes:

3. Types of residential housing?

☐ Single family ☐ Multi-family ☐ Mobile homes ☐ HUD ☐ New-renovation

Notes:

4. Overall condition of most residential units?

☐ Excellent ☐ Good ☐ Fair ☐ Poor / Deteriorated ☐ Cannot see

Notes:

5. Type of most front yards?

☐ None ☐ Traditional lawn ☐ Landscaped ☐ Heavily wooded ☐ Mixed

Notes:

6. Presence of porches?

☐ None ☐ Less than half ☐ Half ☐ More than half

Notes:

7. Presence of borders? (Fences, shrubs, etc.)

☐ None ☐ Less than half ☐ Half ☐ More than half

Notes:

8. Presence of **visible** security warning signs?

☐ None ☐ Less than half ☐ Half ☐ More than half

Notes:

9. Any boarded up, burned, or abandoned residential units?

☐ Yes ☐ No

Notes:

Public, Residential, Non-Residential Spaces | Aesthetics

10. Presence of land is vacant or underdeveloped?

☐ None ☐ Less than half ☐ Half ☐ More than half

Notes:

11. Overall condition of land is vacant or underdeveloped?

☐ Excellent ☐ Good ☐ Fair ☐ Poor / Deteriorated ☐ Cannot see

Notes:

Public, Residential, Non-Residential Spaces | Aesthetics Cont.

12. General condition of public spaces

☐ Excellent ☐ Good ☐ Fair ☐ Poor / Deteriorated ☐ Mixed

Notes:

13. Visible people

☐ None ☐ Children ☐ Youth ☐ Adults

Notes:

14. People are physically active?

☐ No ☐ Yes, children ☐ Yes, youth ☐ Yes, adults

Notes:

15. Public neighborhood park or playground in segment?

☐ No ☐ Yes, park ☐ Yes, playground ☐ Yes, church park and/or playground

Notes:

16. Overall condition of park and/or playground

☐ Excellent ☐ Good ☐ Fair ☐ Poor / Deteriorated ☐ Mixed

Notes:

17. Visible Dogs

☐ No ☐ Yes, dog is leashed ☐ Yes, dog is out loose

Notes:

18. Litter | Amount

☐ None ☐ Little amount ☐ Moderate amount ☐ Considerable amount

Notes:

19. Litter | Type

☐ Non-alcoholic cans ☐ Alcoholic cans ☐ Large items | tires, furniture, appliances

Notes:

20. Graffiti | Amount

☐ None ☐ Little amount ☐ Moderate amount ☐ Considerable amount

Notes:

Transit | Walking and Bicycling Amenities

21. Presence of sidewalk

☐ None ☐ one | entire street ☐ one | partial street ☐ Both | entire street ☐ Both | entire street

Notes:

22. Presence of sidewalk buffer

☐ None ☐ Within 2' of street ☐ Between 2'-6' of street ☐ Greater than 6' of

Notes:

The walk audit revealed that 70% of the streets in the focus area had 'poor/dangerous' sidewalk conditions and that 70% of the blocks had landscaping that creates blind or hiding spots



Ivanhoe

"[My] family is being educated on gardening and growing fruits and vegetables. [I'd like] healthy eating classes for nutrition and for diabetes needs."

"We could greatly benefit from new affordable homes and apartments. [Also] recreational facilities such as skating rinks, bowling, boxing center, basketball center, etc."



1 SCALE PROGRAMS TO INCREASE IMPACT

Functional

"Horizontal integration occurs when new programs are added adjacent to existing programs. Two examples for INC to consider could be increasing child care services for residents attending INC events and to incentivize neighborhood cleanups through a volunteer voucher program, where vouchers could be redeemed for food items at the Grown in Ivanhoe Farmers' Markets."

2 CONSTRUCT THE BUILT ENVIRONMENT

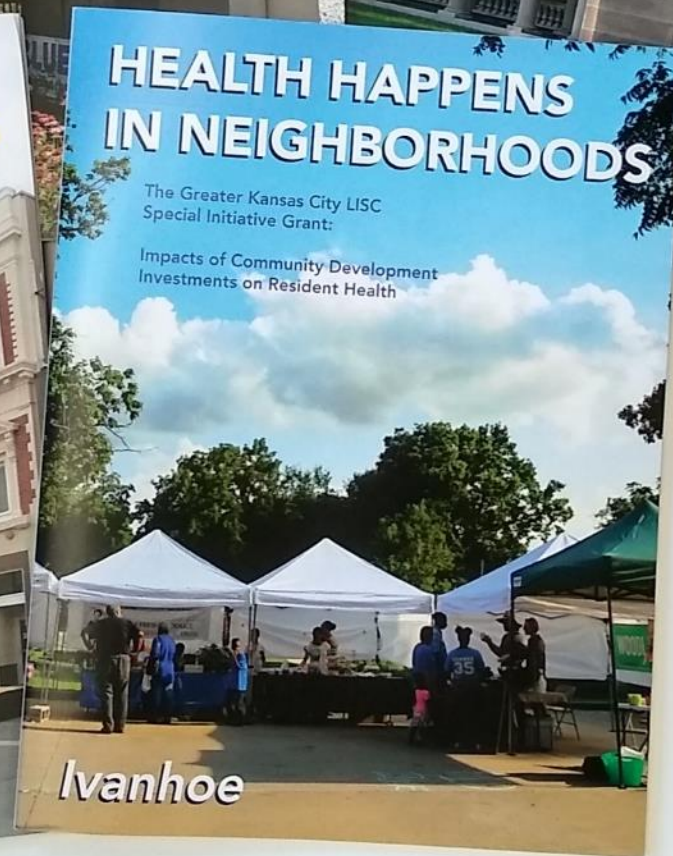
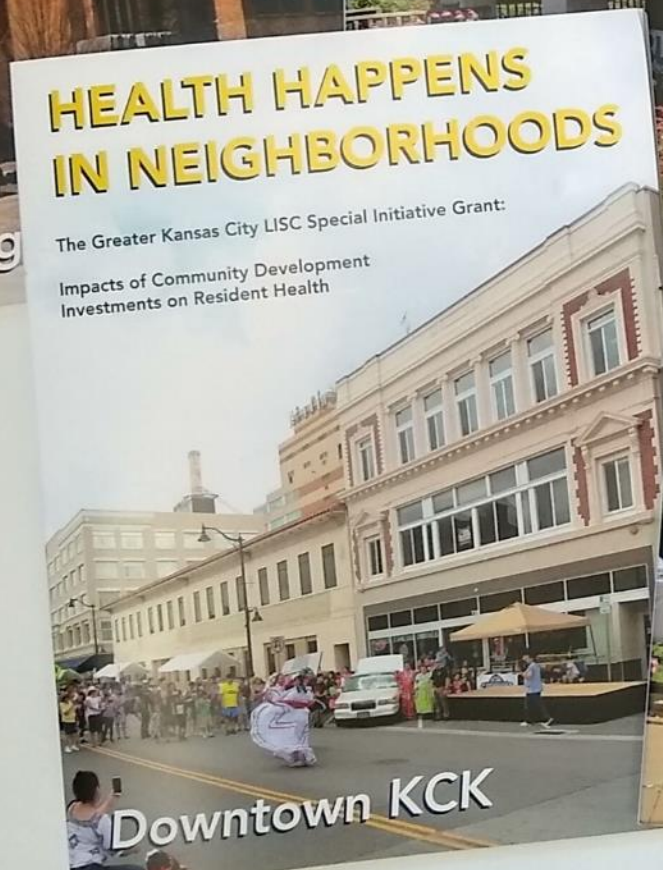
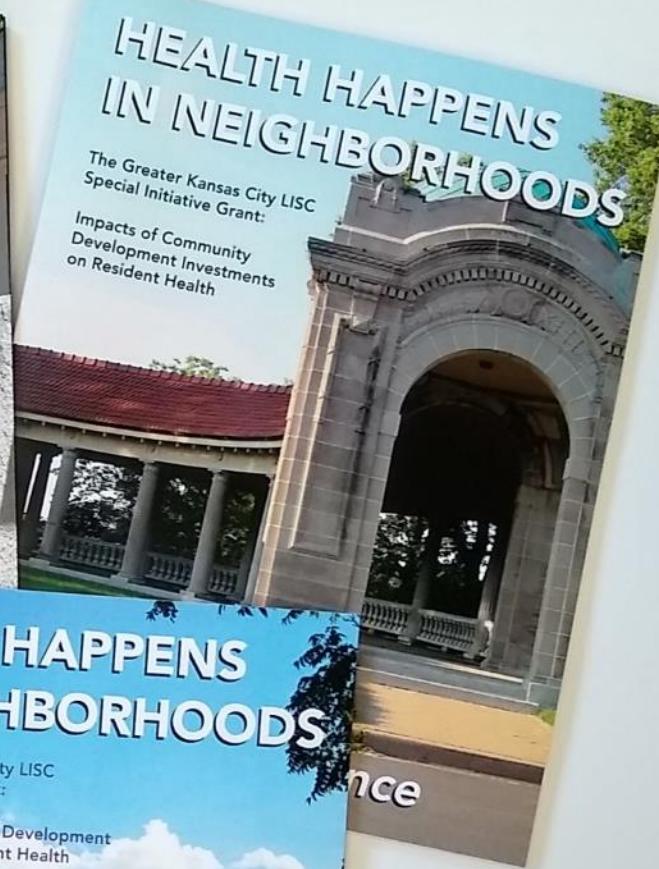
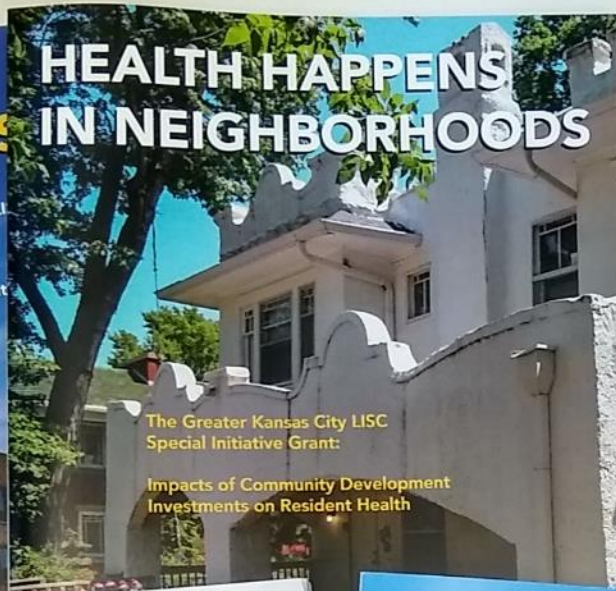
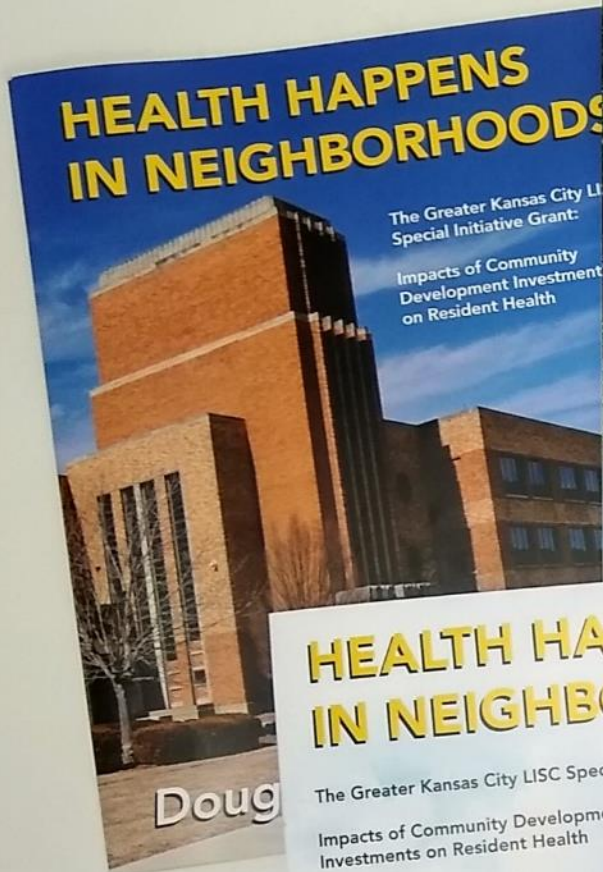
GO Bonds

"An unexpected consequence of this system may be that areas that have seen historic disinvestment (for example, a lack of retail development such as shopping centers, grocery stores, pharmacies, or restaurants — all issues identified in the Ivanhoe card-sorting workshop) will by default score lower on the point system being used, and therefore receive sidewalk repairs later in the process."

3 ESTABLISH THE FOUNDATION FOR A THRIVING NEIGHBORHOOD

Neighborhood Planning Process

"1. Residents must demand a more inclusive planning process. 2. Elected officials must ensure that city staff work collaboratively with neighborhoods everyday. 3. Cities should adequately fund a *Neighborhood Planning Office* for city staff to build trust. 4. Citizen planners should be empowered with dynamic and accessible tools for mapping, visualizing, and planning their neighborhoods. 5. Equip residents with the tools to hold their elected officials accountable."



HEALTH HAPPENS ^{IN} NEIGHBORHOODS

HEALTH HAPPENS IN NEIGHBORHOOD

The Greater Kansas City LISC
Special Initiative Grant:
Impacts of Community Development
Investments on Resident Health

DIRECTIONS:

Identify a block area street segment.
Complete a scorecard and then add up the points and divide by the factor to identify the average score.

Residential Land Use	/6 points	=	_____
Public: Residential, Non-Residential Spaces—Aesthetics	/6 points	=	_____
Traffic: Walking & Bicycling Amenities, Road Characteristics	/5 points	=	_____
Safety: Natural Surveillance, Territorial Reinforcement	/10 points	=	_____
Maintenance and Greenspace	/6 points	=	_____
Non-Residential Land Use: Safety—Surveillance, Territory	/10 points	=	_____
& Maintenance			

Scale
3.5-4.0
3.0-3.4
2.5-2.9
1.0-2.4

= most favorable conditions
= least favorable conditions

Repeat exercise with other streets. Identify your best and possible greatest impact.

where you see greatest need

dote
agency

HEALTH HAPPENS ^{IN}
NEIGHBORHOODS

HEALTH
NEIGH

Implementation



Lessons Learned & Recommendations

Brenda Calvin, Senior Program Officer

Health Forward Foundation

Our mission is to provide leadership, advocacy, and resources in order to eliminate barriers and promote quality health for the uninsured and underserved in our service area.

The vision we have for our region is simple:
We want healthy people living in healthy communities.

To bring this vision to life, we are tackling pressing health issues by focusing on those most in need, advocating for health and wellness, and partnering with communities. Together we will continue to move health forward.

Shannon Criss, Associate Professor KU School of Architecture Dotte Agency

DOTTE AGENCY is a multi-disciplinary design collaborative engaging neighborhoods to shape the built environment in order to improve public health.



<http://www.dotteagency.org/>

Nailah M'Biti, Real Estate Director Ivanhoe Neighborhood Council

The Ivanhoe Neighborhood is a growing and thriving community in the heart of Kansas City, Missouri from 31st to Cleaver Blvd; Paseo to Prospect.

The **Ivanhoe Neighborhood Council** works with the community to help build a clean, beautiful, safe and thriving neighborhood.



<https://www.facebook.com/INCthrives/>

Q&A

**Contact: Ina Anderson,
Deputy Director, Greater Kansas City LISC**
ianderson@lisc.org

Full reports for all neighborhoods can be found at:

<http://www.lisc.org/kansas-city/what-we-do/health/>