

A Pediatrician's Perspective

Jeffrey D. Colvin, MD, JD

Director of Research, General Academic Pediatrics
Medical Director, Center for Community Connections
Children's Mercy Kansas City



What I see from here



- Too early of a start
- Lifelong conditions
- Unhealthy life trajectories

But the challenges are much greater



- **Housing insecurity**
- **Substandard housing**
- **Food insecurity**
- **Unemployment**
- **Immigration status**
- **Violent neighborhoods**
- **Utility turn-offs**
- **Debt and payday loans**
- **Racism**
- **Substance abuse**
- **Domestic violence**
- **Adult health insurance**

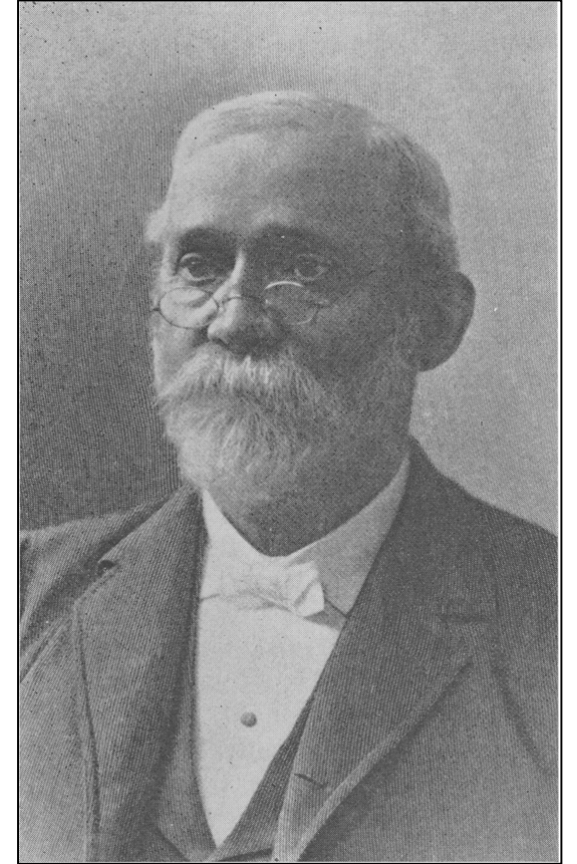
The origins of pediatrics

The Fathers of Modern American Pediatrics:

- Abraham Jacobi
 - “Paediatrics”
 - Mortality disparities between poor & wealthy children
- Job Lewis Smith
 - Conditions in the shanties of poor laborers’ families & diarrhea in children



Abraham Jacobi
(1830-1919)

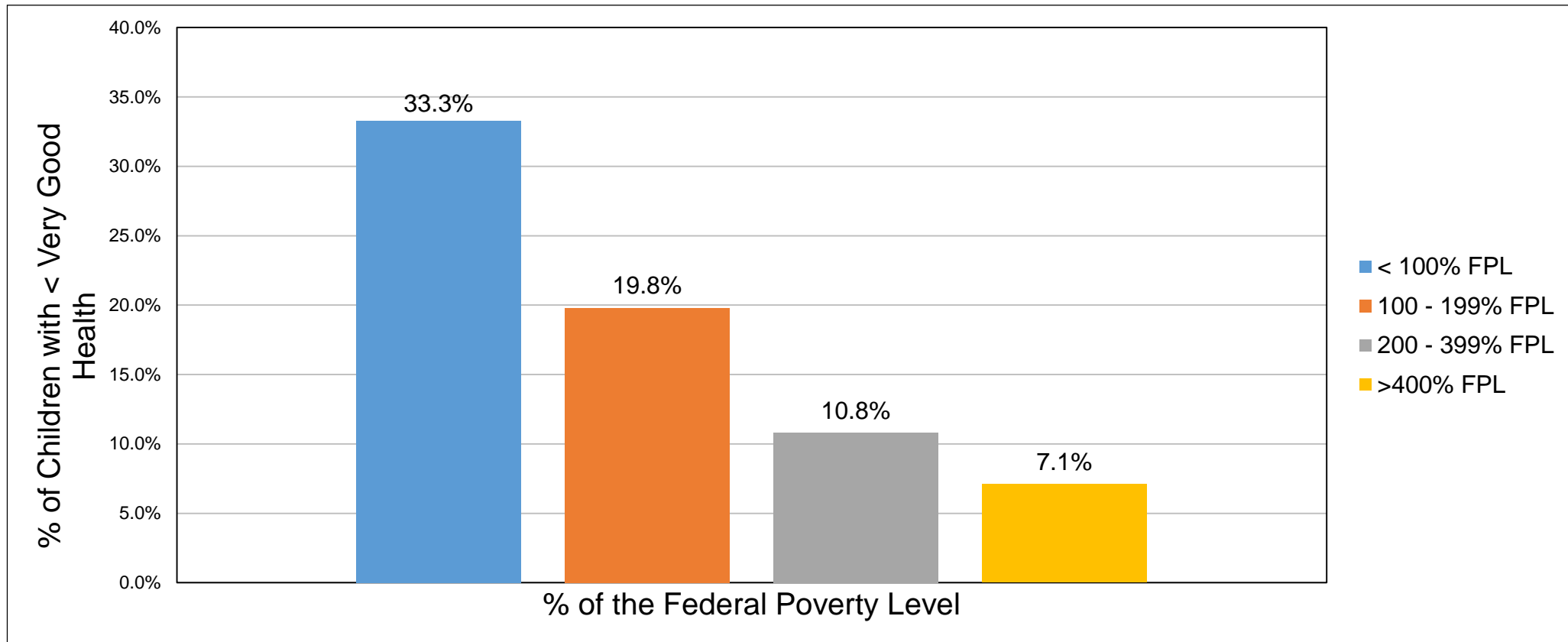


Job Lewis Smith
(1827-1897)

Poverty and children's health

Childhood poverty is associated with:

- Increased prevalence of chronic conditions
- Lower health-related quality of life

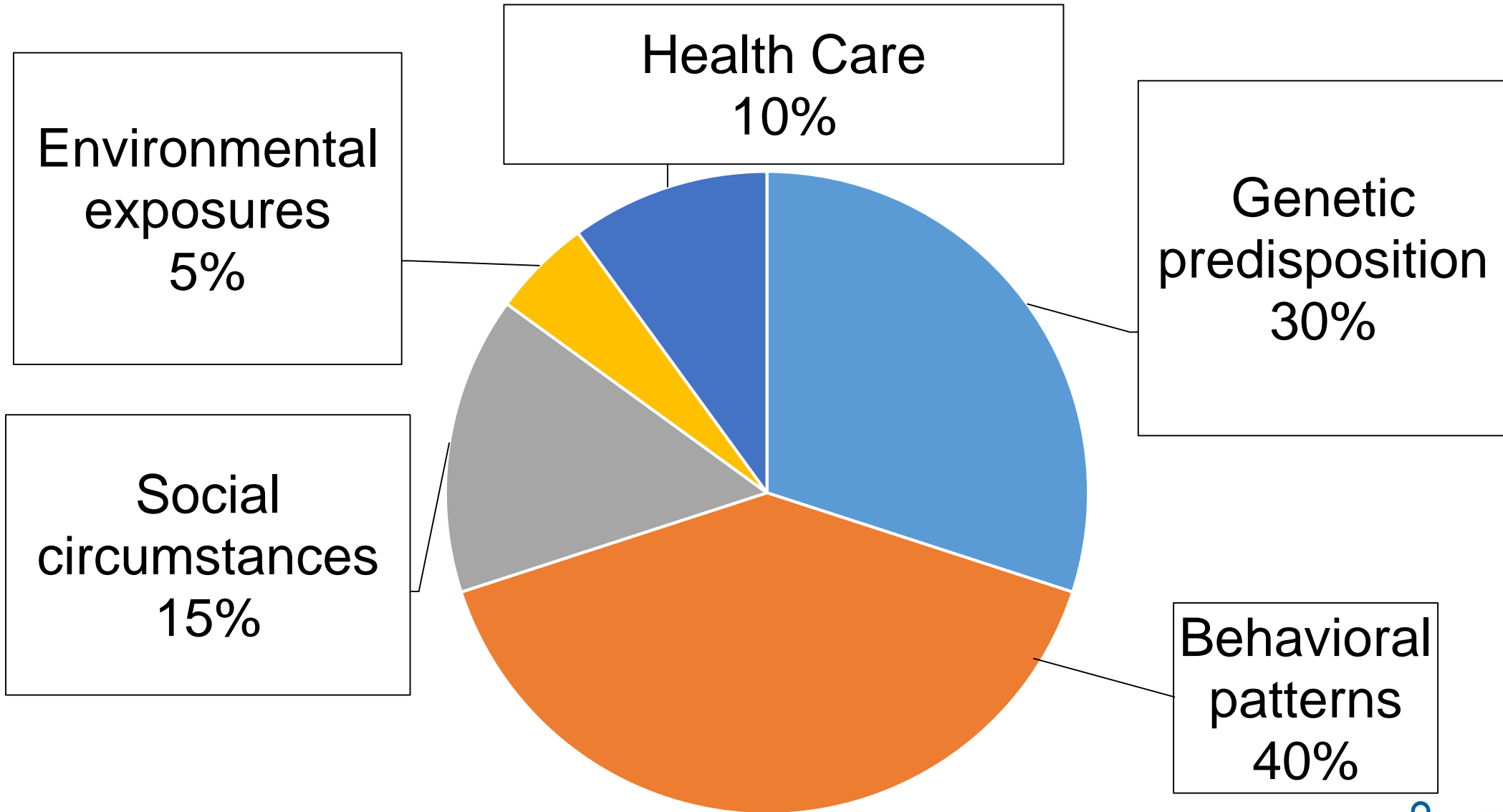


Source: RWJ, "Beyond Health Care: New Directions to a Healthier America" 2009

How does poverty get under the skin?



Where does health begin?



Schroeder SA. N Engl J Med 2007

Health Begins . . . Over the Life Course

“Good health begins in the places where we live, work, learn, and play.”

- Robert Wood Johnson Foundation

Critical Periods & Latent Effects (Fetal Origins Hypothesis, Developmental Programming)

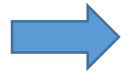
Cumulative Exposure (Dose response, Duration of Exposure: Independent Effects, Chain of Risk)

Social Trajectories (Positive and Negative Social Mobility)

Pre-Conception → Prenatal → Early Childhood → Middle Childhood → Adolescence → Adulthood

My patients are *our* patients.

Your patients are *my* patients.



Social Determinants: it's in our roots



**Drs. Katherine Berry
Richardson and Alice Berry
Graham, founders of Children's
Mercy Hospital**



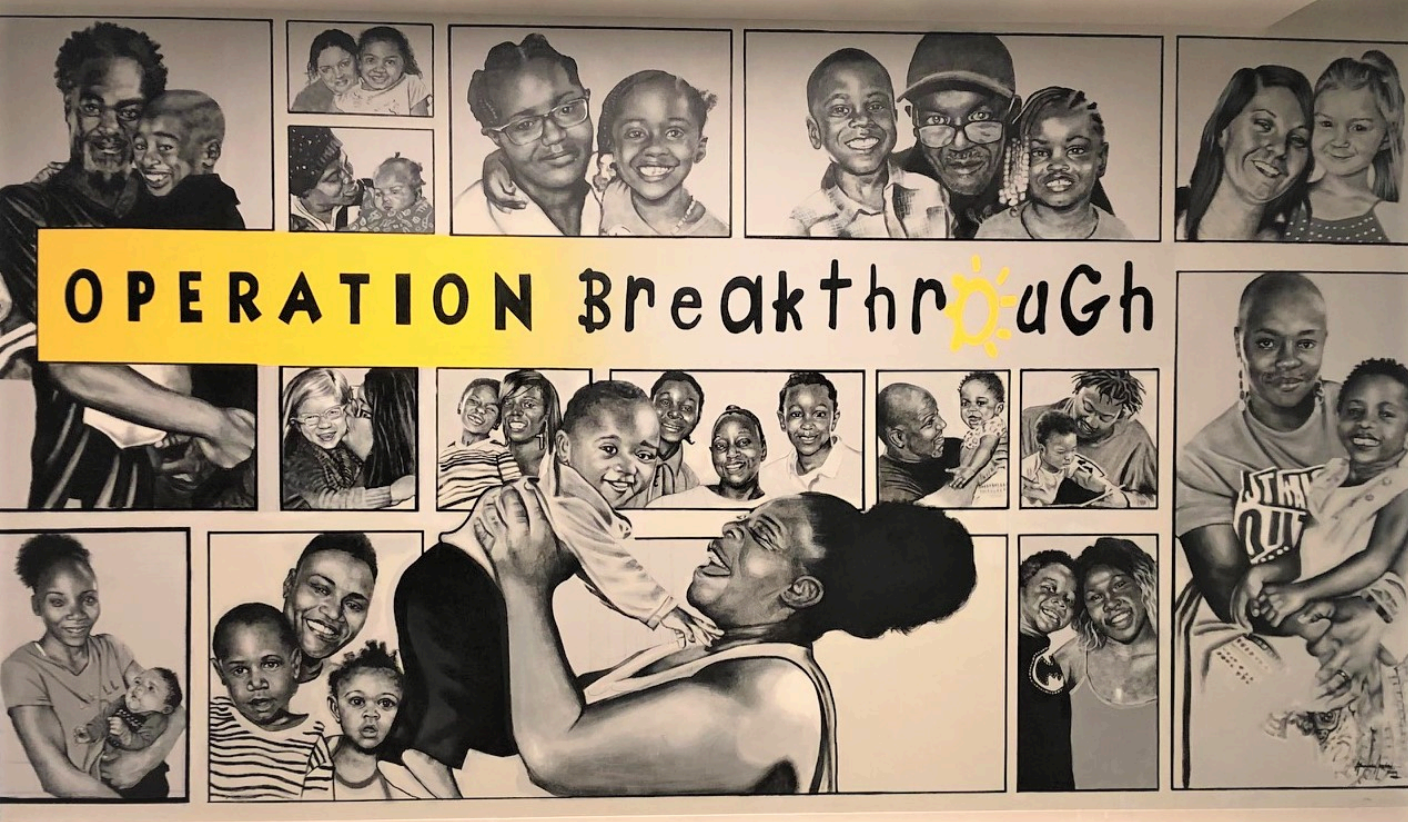
**Abandoned malnourished child from Kansas City
being cared for by one of the Berry sisters,
ca. 1897-1900.**



Continuing the legacy of addressing the social determinants

- Center for Community Connections
 - Onsite co-location of social services and resources for patients (e.g., WIC clinic)
- Legal Services Clinic
 - The first medial-legal partnership in the region (2007)
 - >3,000 referrals
- The Pediatric Primary Care Clinic
 - The largest safety net clinic in the the Kansas City region
- Psychosocial Screening Task Force
 - Coordinated, evidence-based, best practices for psychosocial screening and coordinated response
- Robust social work presence
 - Expertise in psychosocial assessments to get to the root cause of family needs and the knowledge of the most appropriate resources





- Home visiting programs for vulnerable infants
- Fresh food summer lunch distribution
- Community gardens
- Clinic at Operation Breakthrough

- NIH-funded research on the social determinants of health, health disparities, and health equity published in *Health Affairs*, *JAMA Pediatrics*, *Pediatrics*, *Health Equity*, *Journal of Immigrant and Minority Health*, and others.
- Invited to the National Advisory Committee and Research Advisory Committee of SIREN, RWJF's Social Interventions Research and Evaluation Network

But, none of it is enough . . .



Collaboration is the solution.

Thank you.

Jeffrey D. Colvin, MD, JD

Director of Research, General Academic Pediatrics

Medical Director, Center for Community Connections

Children's Mercy Kansas City

jdcolvin@cmh.edu

Note: for HIPAA and confidentiality purposes, "Aaron" is not an actual patient, but is a composite and similar to many of my patients. All images are publicly available on the internet.