

# **Aligning health equity, social determinants and academic achievement**

Kim Riley, Missouri Care Health Plan

Molly Ticknor, KC Public Schools

# The Nail

<https://www.youtube.com/watch?v=-4EDhdAHrOg>

“All of our health issues will never be solved within the medical care system, or even within the public health system, because there are things that are happening in people’s daily lives that are determining how healthy or sick they are, and if we’re ever going to try to address health issues, we can’t just do it only through the hospitals or through the doctors’ offices, or even through CDC. We have to be working with the schools. We have to work with the justice system, transportation, housing, labor. All these sectors influence how well our population is.”

Dr. Camara Jones

Former Research Director on Social Determinants of Health, Centers for Disease Control

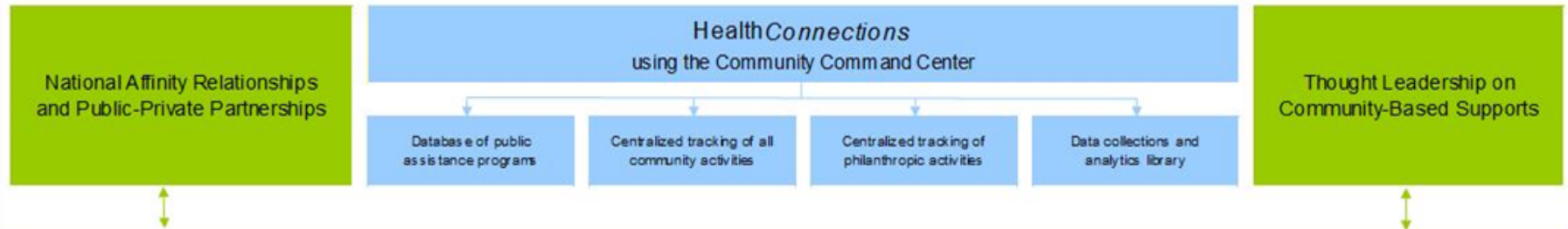
[www.unnaturalcauses.org](http://www.unnaturalcauses.org)

# Learning Objectives

- Learn the framework for the newly launched Kansas City Public Schools Culture of Health Community Advisory Committee - a new operating model for Community Health.
- Understand the process of improving health outcomes through social services provided by an interdisciplinary team of school professionals and clinicians.
- Understand the process of creating collaborative partnerships to address policy, systems and environmental change and impact health outcomes and the social determinants of health.
- Learn strategies to help patients become self-sufficient in advocating for resources and navigating health and social services systems.

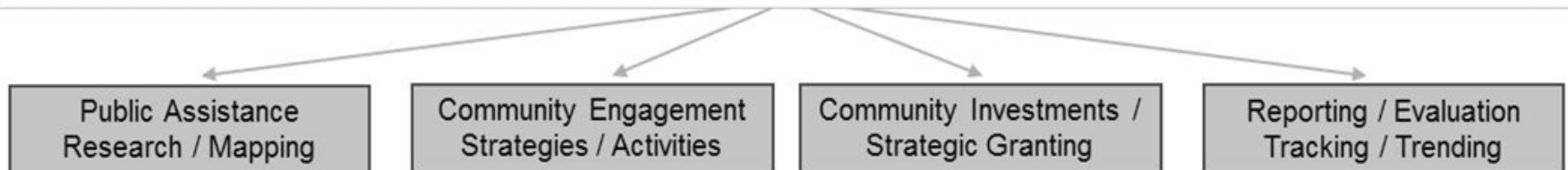
# Missouri Care Health Connections Model

## Advocacy and Community Based Programs



## The CommUnity Commitment

a national assembly of concerned citizens who are focused on the nation's public assistance program or Social Safety Net

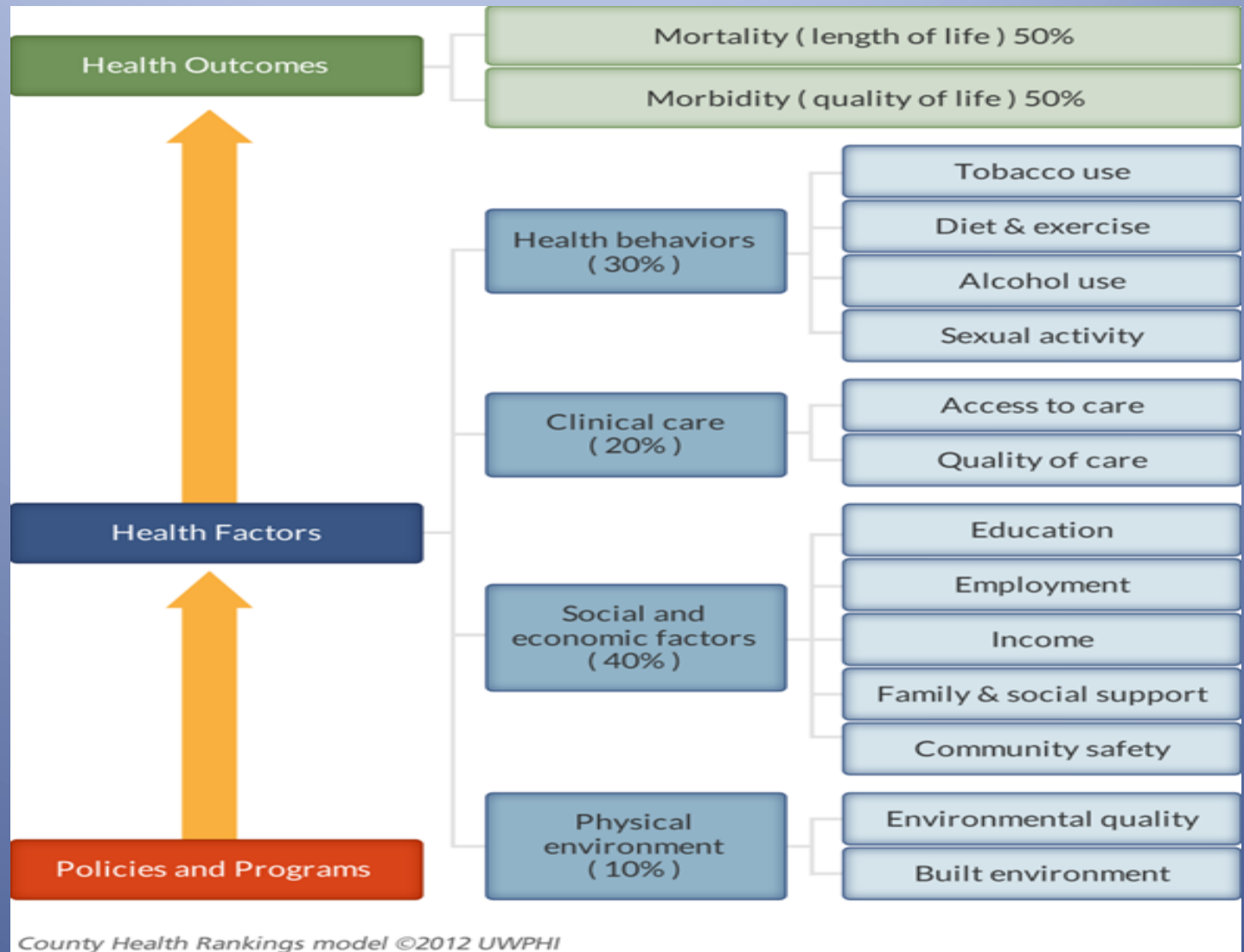


## Linking Social Services with Health Outcomes

- Assembling data on the social service network in all states (by zip code).
- Assessing the viability of the social service network in all states.
- Preparing resource analytics to identify social service gaps.
- Implementing community-based, gap-fill solutions.
- Measuring impact of social supports on health.

The Robert Wood Johnson Foundation and University of Wisconsin prepared the following model using the County Health Rankings, Census data and public health sources. The model shows that 20% of health outcomes are driven by the clinical care setting, while the other 80% are tied to health behaviors, social/economic factors and physical environment:

Robert Wood  
Johnson  
Foundation.  
County Health  
Ranking, Tools  
and Resources.  
<http://www.countyhealthrankings.org/resources>.





# Health Connections Councils: Strategy for impacting the 80%

## What is a HealthConnections Council?

- A HealthConnections Council (HCC) is a collaborative assembly of community and civic leaders representing a broad spectrum of stakeholders including local social service agencies, faith-based organizations, public representatives, advocacy groups, managed care organizations and service providers.
- The HCC has been designed to identify health issues at a community level using key health data in order to identify ways to improve.

## HealthConnections Council Objectives:

- Understand the community's existing social service and public assistance programs
- Define an area of improvement to guide the community toward implementing and sustaining changes around healthy living strategies (i.e., increased physical activity, improved nutrition and availability of affordable healthy food).
- Identify partnering opportunities to fill the most urgent gaps in local safety net services while seeking creative ways to proactively sustain services in local communities.

# Community Assistance Line: Main Strategy for impacting the 80%



## GET CONNECTED WITH THE RIGHT SOCIAL SERVICES.



### CALL

MO CommUnity Assistance Line (CAL):  
1-866-775-2192

Video Relay: 1-855-628-7552

At no cost to anyone  
Please note that if you do get assistance,  
you may have to report it to the  
Family Support Division.

- ☐ Transportation
- ☐ Food Assistance
- ☐ Financial Assistance (Utility, Rental)
- ☐ Support Groups
- ☐ Disability-related Services
- ☐ Homeless Services
- ☐ Education Assistance (School, Health)
- ☐ Respite Care
- ☐ Other \_\_\_\_\_

CAD\_00737E State Approved 10072015  
MOC15094

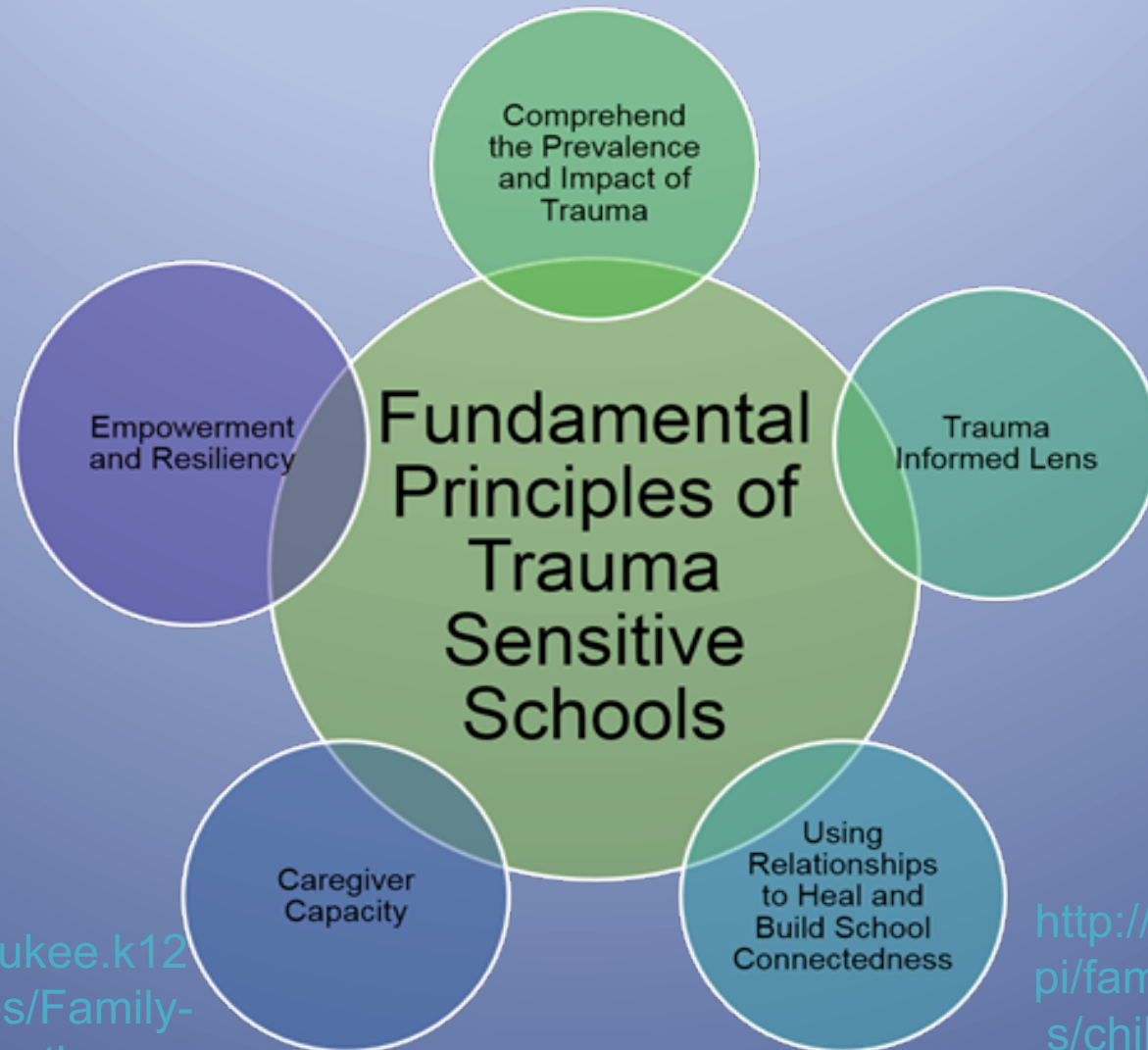
©WellCare 2017  
MO7MODCRD00737E\_0000



# HCC Kansas City: Creating Coalition of Health



# Trauma Informed School Framework



<http://mps.milwaukee.k12.wi.us/en/Families/Family-Services/Intervention---PBIS/Trauma.htm>

<http://www.apa.org/pi/families/resources/children-trauma-update.aspx>

# KCPS Socio-Emotional Support Model

## Effective Systems of Care

- Appropriate Information Sharing
- Continuous and effective communication
- Supportive navigation through all Systems of Care
- Wraparound support across all departments
- Family Driven and Student- Guided

### Tier III

Counseling, Therapy, or Psychiatric Support  
Safety/Crisis Plans with Re-Entry Plan  
Streamline Referral and Follow-up Processes  
Deepened Collaboration with Students, Families, & Community Partners

### Tier II

Early Identification, Screening & Progress Monitoring (PST, onsite supports)  
Effective Group Interventions  
Student Success Plans  
Co-Planning Strategies with Students, Families, & Community Partners (student-driven)

### Tier I

Promote Relationship Building  
Foster Resiliency  
Rich Socio-Emotional Learning Embedded into Daily Practice  
Trauma Sensitive Practices, Procedures, & Protocols  
Mental Health & Wellness Education

# KCPS Culture of Health Coalition





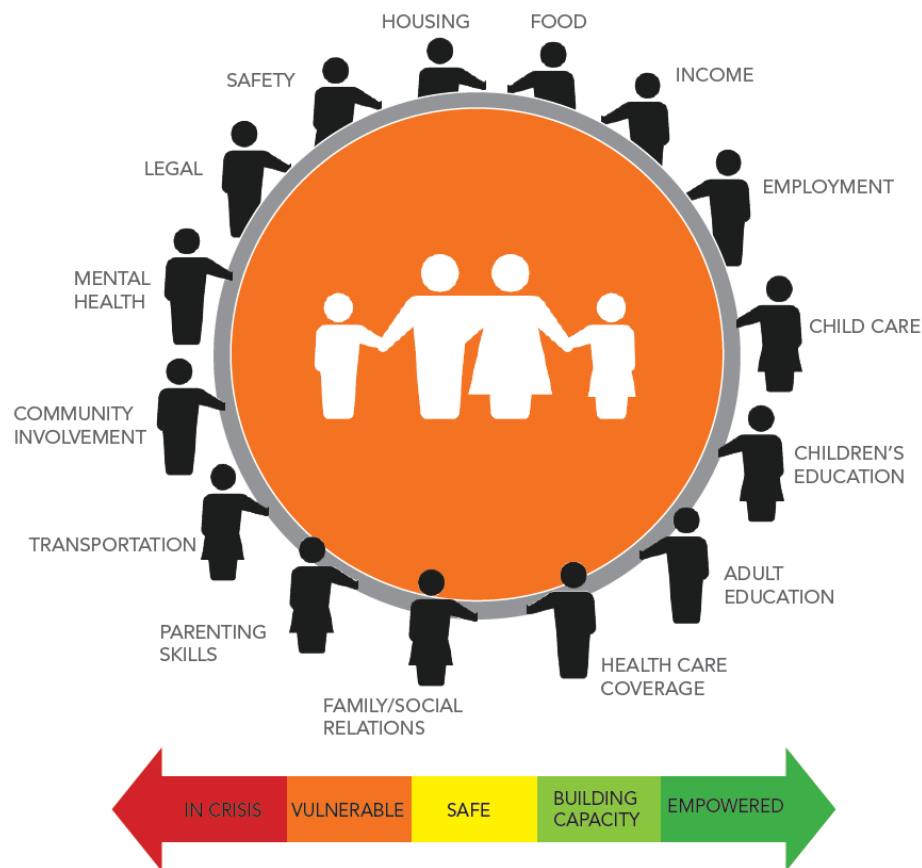
# METRO LUTHERAN MINISTRY

SERVING WITH VISION, PURPOSE,  
AND COMPASSION SINCE 1971

## THE IMPACT MODEL

To help students, we have to help families...and no one agency can do it alone. The Impact Model is a coalition of trusted partners with unique knowledge and resources in their respective domains such as food, income, and employment.

By working together, simultaneously, the partners address a family's immediate issues while developing a plan for permanent and lasting solutions.



FEAR DIMINISHED • STRENGTH REVEALED • HOPE RESTORED

[WWW.MLMKC.ORG](http://WWW.MLMKC.ORG)

# Strategic Prevention Framework







# Contacts

Kim Riley

[Kimberly.Riley@wellcare.com](mailto:Kimberly.Riley@wellcare.com)

Molly Ticknor

[mticknor@kcpublicschools.org](mailto:mticknor@kcpublicschools.org)